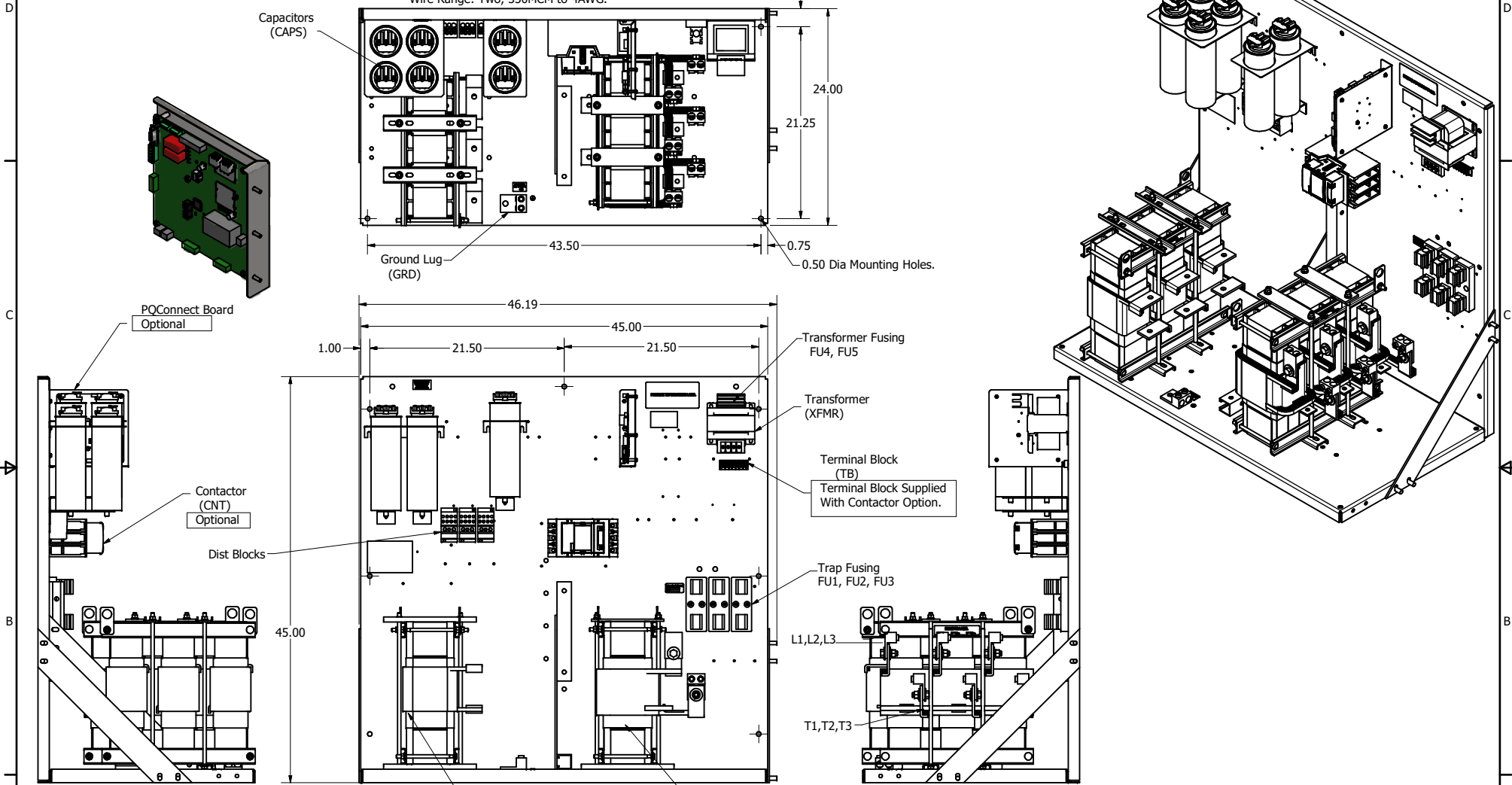


HGP Open Part Number	Schematic Drawing #	Approx Weight (LBS)
HGP0100DW0S0000	28697-208S	680
HGP0100DW0C0000	28697-208	690
HGP0100DW0S1000	29597-DWPQ1	690
HGP0100DW0C1000	29597-DWPQ	700

Note: For Torque Information See IOM Manual.
Customer Connections.
L1, L2, L3, T1, T2, T3
Wire Range: Two, 350MCM to 4AWG.

HGP Part Number	HorsePower (HP)	kVar	Harmonic	Voltage (V)	Hz.	Phase
HGP0100DW----	100	22.5	5th	208	60	3

Ground Lug
Wire Range: Two, 350MCM to 4AWG.



Note: Customer is responsible for proper cooling of filter components on open panels.
Capacitors Maximum Ambient 50°C

HGP0100DW----				
Components	0S0000	0C0000	0S1000	0C1000
Line Reactor (LR)	X	X	X	X
Trap Reactor (TR)	X	X	X	X
Capacitor (Cap)	X	X	X	X
Trap Fusing, FU1, FU2, FU3	X	X	X	X
Contactor (CNT)		X		X
Transformer (XFMR)		X	X	X
XFMR Fusing, FU4, FU5		X	X	X
PQConnect Board			X	X

Customer Is Responsible For Installation to Meet All National And Local Electrical Codes.

Material(s) Shall be RoHS Compliant

THE INFORMATION AND DESIGNS CONTAINED IN THIS DRAWING ARE CONFIDENTIAL AND THE PROPRIETARY PROPERTY OF ALLIED MOTION TECHNOLOGIES INC. AND ITS SUBSIDIARIES. NEITHER THIS DESIGN NOR ANY INFORMATION CONTAINED IN THIS DRAWING MAY BE REPRODUCED OR DISCLOSED TO OTHERS WITHOUT THE EXPRESS WRITTEN CONSENT OF ALLIED MOTION TECHNOLOGIES INC. AND ITS SUBSIDIARIES.

NO	REVISION	DATE	BY
A	AS DESIGNED	11/6/2020	DSW

TOLERANCES (EXCEPT AS NOTED)
DECIMAL
.XX ± .25
.XXX ± .10
FRACTIONAL
± 1/32
ANGULAR
± 1°

TCL W132N10611 (Rev 13 Feb 2022)
Germanstown, WI 53022
© 2023 TCI, LLC
An *Allelix Motion Group* Company
Harmonic Guard Passive
HGP0100DW0----, 100HP, 208/3/60, Open
DRN BY: DSW DATE: 11/6/2020 108769DG
SCALE: 1/8 DRVID: HSE SHEET: 1 OF 1